



***NEW 14th STREET SLUG LINE AT THE I-95 / ROUTE 123
COMMUTER PARKING LOT STARTING MAY 2nd***



The new 14th Street slug line will be at the Route 123 Commuter Lot. This map shows the access improvements made to that facility. This lot does have bus service and is currently only filled to about 50% capacity.

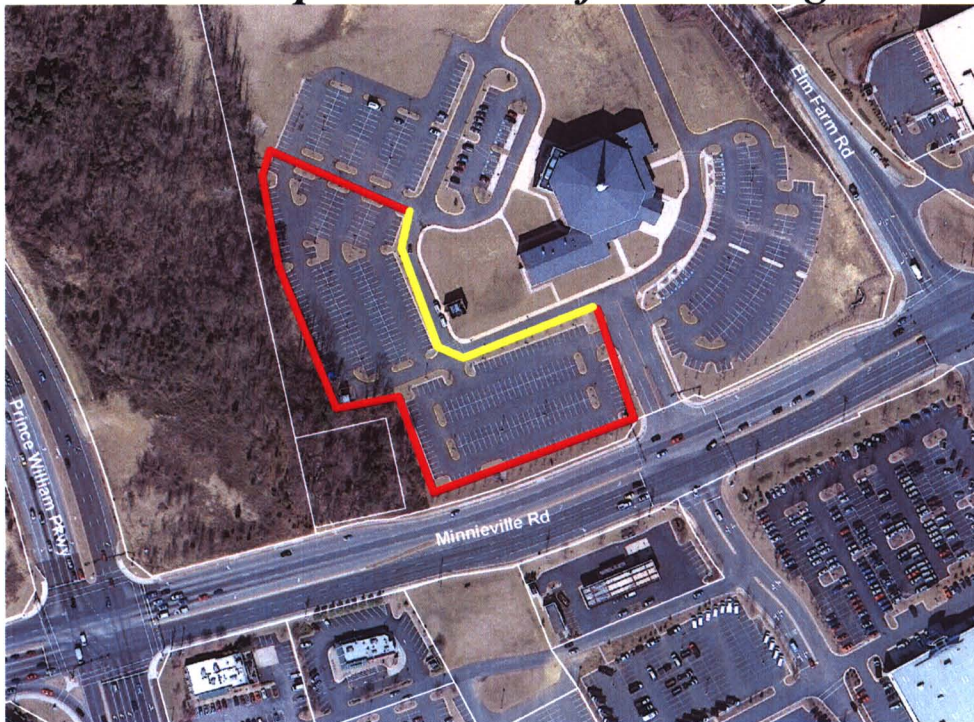


Remember that Commuter Connections offers the Guaranteed Ride Home Program. Registering for this program allows you to have a FREE safe and reliable ride home four times a year, when an emergency arises. To register and/or for additional commuter information please go to commuterconnections.org or mwcog.org/commuter2.



STARTING MAY 2nd, NEW SLUG LINES TO ROSSLYN AND THE PENTAGON AT FIRST BAPTIST CHURCH OF WOODBRIGE WITH NEW EVENING SHUTTLE SERVICE FROM THE HORNER ROAD COMMUTER LOT !!!

First Baptist Church of Woodbridge



The County has leased 370 spaces at the First Baptist Church (FBC). Slug-line.com has announced two new slug lines for this commuter lot (Rosslyn and Pentagon) and PRTC has announced additional evening shuttle service from the Horner Road commuter lot to FBC commuter lot starting May 2nd.

For more information please go to Slug-lines.com and PRTCtransit.org